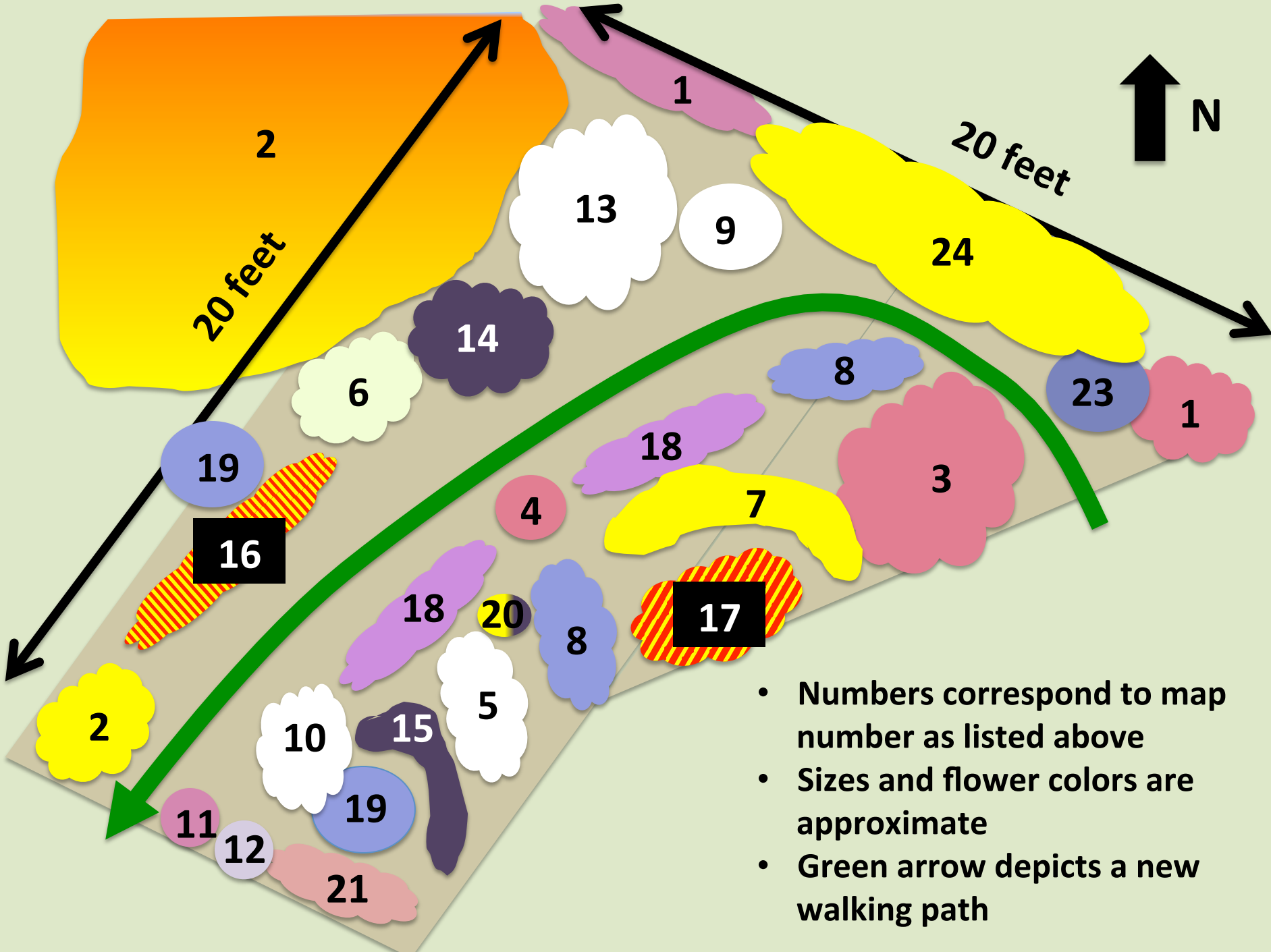


Honeycomb Hideout new planting list and plan. Planted August 4, 2015

Christine Casey, Häagen-Dazs Honey Bee Haven, UC Davis Department of Entomology and Nematology

| Plant name, approximate bloom period, and flower color | Map no. | Jan | Feb | Mar | Apr | May | Jun | Jul | Aug | Sep | Oct | Nov | Dec | Resource P=pollen N=nectar | WUCOLS ¹ water use |
|--|---------|-----|-----|-----|-----|-----|-----|-----|-----|-----|-----|-----|-----|----------------------------|-------------------------------|
| Escallonia (<i>Escallonia. x exoniensis</i> 'Frades' and <i>E.</i> 'Kompakta') | 1 | x | x | x | x | | | | | | | | | p/n | M |
| Blanket flower 'Arizona Sun' (<i>Gaillardia x grandiflora</i> 'Arizona Sun') | 2 | | | x | x | x | x | x | x | x | x | x | | p/n | L |
| Creeping thyme (<i>Thymus praecox</i>) | 3 | | | x | x | | | | | | | | | n | L |
| Cape mallow 'Slightly Strawberry' (<i>Anisodonte x hypomadara</i> 'Slightly Strawberry') | 4 | | | x | x | x | x | x | x | | | | | p/n | M |
| Santa Barbara daisy (<i>Erigeron karvinskianus</i>) | 5 | | | x | x | x | x | x | x | x | x | | | p/n | L |
| Yarrow 'Desert Eve Cream' (<i>Achillea</i> 'Desert Eve Cream') | 6 | | | x | x | x | x | x | x | x | x | | | p | L |
| Yarrow 'Moonshine' (<i>Achillea</i> 'Moonshine') | 7 | | | x | x | x | x | x | x | x | x | | | p | L |
| Catmint 'Walker's Low' (<i>Nepeta x faassenii</i> 'Walker's Low') | 8 | | | x | x | x | x | x | x | x | x | x | | n | L |
| Mock orange (<i>Philadelphus</i> 'Belle Etoile') | 9 | | | | x | | | | | | | | | p/n | M |
| Calamint (<i>Calamintha nepetoides</i>) | 10 | | | | x | x | x | x | x | x | x | | | n | M |
| Fruity germander (<i>Teucrium cossonii</i>) | 11 | | | | x | x | x | x | x | x | x | | | n | L |
| Oregano 'Hopley's Purple' (<i>Origanum laevigatum</i> 'Hopley's Purple') | 12 | | | | x | x | x | x | x | x | x | | | n | M |
| Gaura (<i>Gaura lindheimeri</i>) | 13 | | | | x | x | x | x | x | x | x | | | p | M |
| Sage 'Caradonna' (<i>Salvia nemorosa</i> 'Caradonna') | 14 | | | | x | x | x | x | x | x | x | | | n | M |
| Sage 'Purple Ginny' (<i>Salvia coahuilensis</i> 'Purple Ginny') | 15 | | | | x | x | x | x | x | x | x | | | n | M |
| Tickseed 'Highland Blast' (<i>Coreopsis</i> 'Highland Blast') | 16 | | | | x | x | x | x | x | x | x | | | p/n | M |
| Tickseed 'Mercury Rising' (<i>Coreopsis</i> 'Mercury Rising') | 17 | | | | x | x | x | x | x | x | x | | | p/n | M |
| Wall germander (<i>Teucrium chamaedrys</i>) | 18 | | | | x | x | x | x | x | x | x | | | n | L |
| Hyssop (<i>Agastache foeniculum</i>) | 19 | | | | x | x | x | x | x | x | x | | | n | H |
| Mullein 'Sixteen Candles' (<i>Verbascum chaixii</i> 'Sixteen Candles') | 20 | | | | x | x | x | x | x | x | x | | | p/n | M |
| Coneflower 'Magnus' (<i>Echinacea purpurea</i> 'Magnus') | 21 | | | | x | x | x | x | x | x | x | | | p/n | M |
| Black-eyed Susan 'Goldsturm' (<i>Rudbeckia fulgida</i> 'Goldsturm') | 22 | | | | x | x | x | x | x | x | x | | | p/n | M |
| Bluebeard (<i>Caryopteris x clandonensis</i>) | 23 | | | | x | x | x | x | x | x | x | | | p/n | M |
| Swamp sunflower (<i>Helianthus angustifolius</i>) | 24 | | | | x | x | x | x | x | x | x | x | | p/n | H |

¹WUCOLS = Water Use Classification of Landscape Species (<http://ucanr.edu/sites/WUCOLS>). Values in italics are not given in WUCOLS and are based on experience at the Honey Bee Haven. Water use will depend on soil type and plant exposure.



- Numbers correspond to map number as listed above
- Sizes and flower colors are approximate
- Green arrow depicts a new walking path